

# COVID-19 PREPAREDNESS AND RESPONSE IN PLACES OF DETENTION

# VISITOR BRIEF

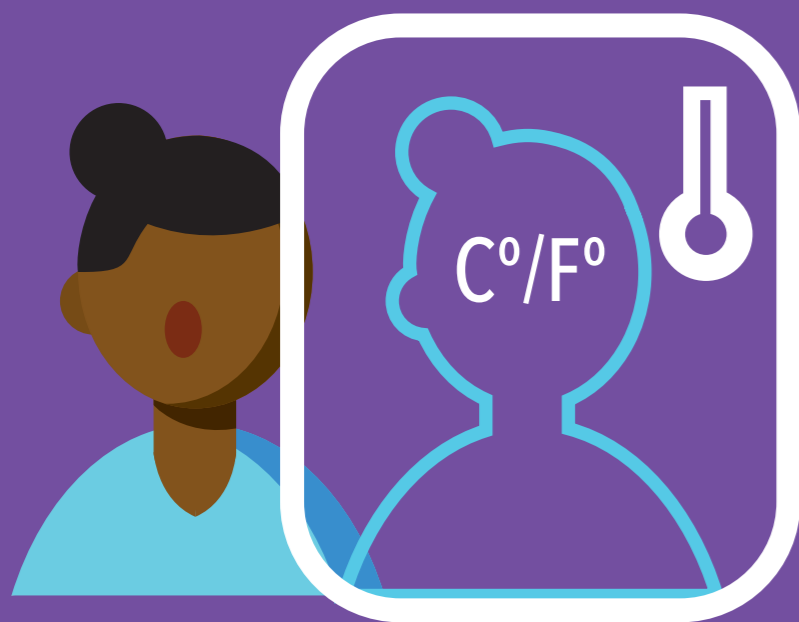


## COLLABORATE

COVID-19 has disrupted regular access into the prison. The health and well-being of the staff, prison population, and community is a priority

## FOLLOW

The regular visit routine may be **temporarily** modified. Please listen to and respect the instructions of the prison staff

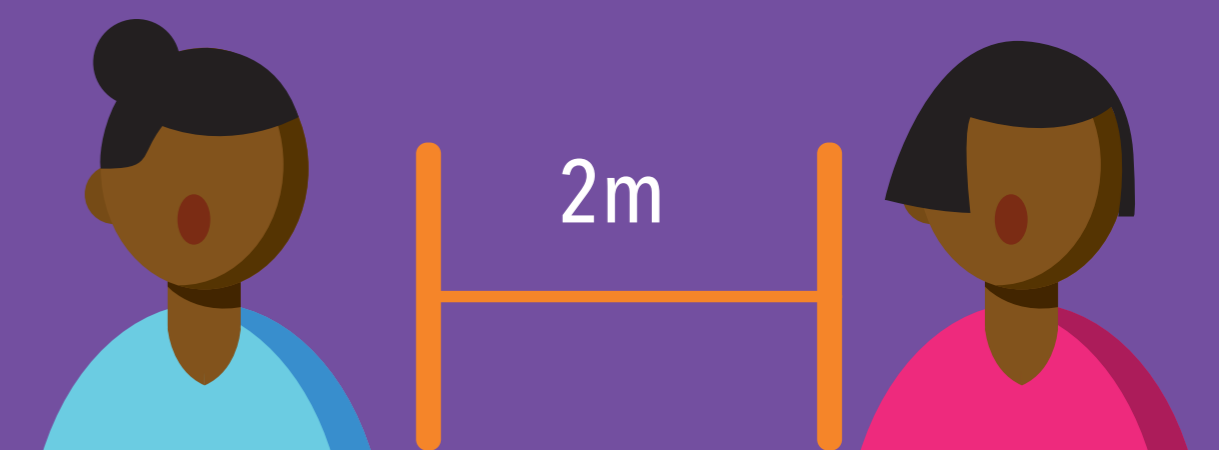


## ALERT

All visitors will be subject to COVID-19 screening: if you demonstrate symptoms or refuse screening, you will not be allowed to enter

## LISTEN

Please keep a distance of 2 meters from other people.



## ASK

If you bring items for a family member and visits have been suspended due to COVID-19, ask the staff to clarify how to leave the items for persons in the prison

## ASK

If visits are suspended, ask a prison officer if there is another way to communicate with your family member

