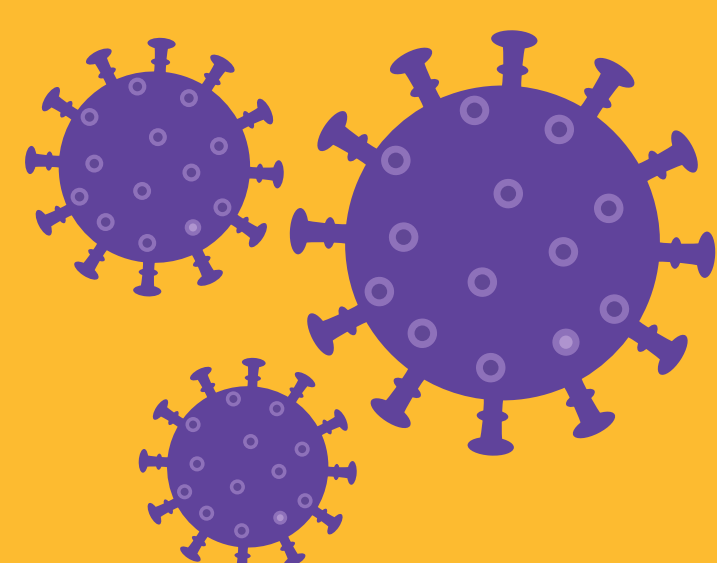


# COVID-19 VIRUS PREPAREDNESS AND RESPONSE IN PLACES OF DETENTION GENERAL INFORMATION



## WHAT IS IT?



COVID-19 is a global issue. It is a disease caused by a new coronavirus, which has not been previously identified in humans.

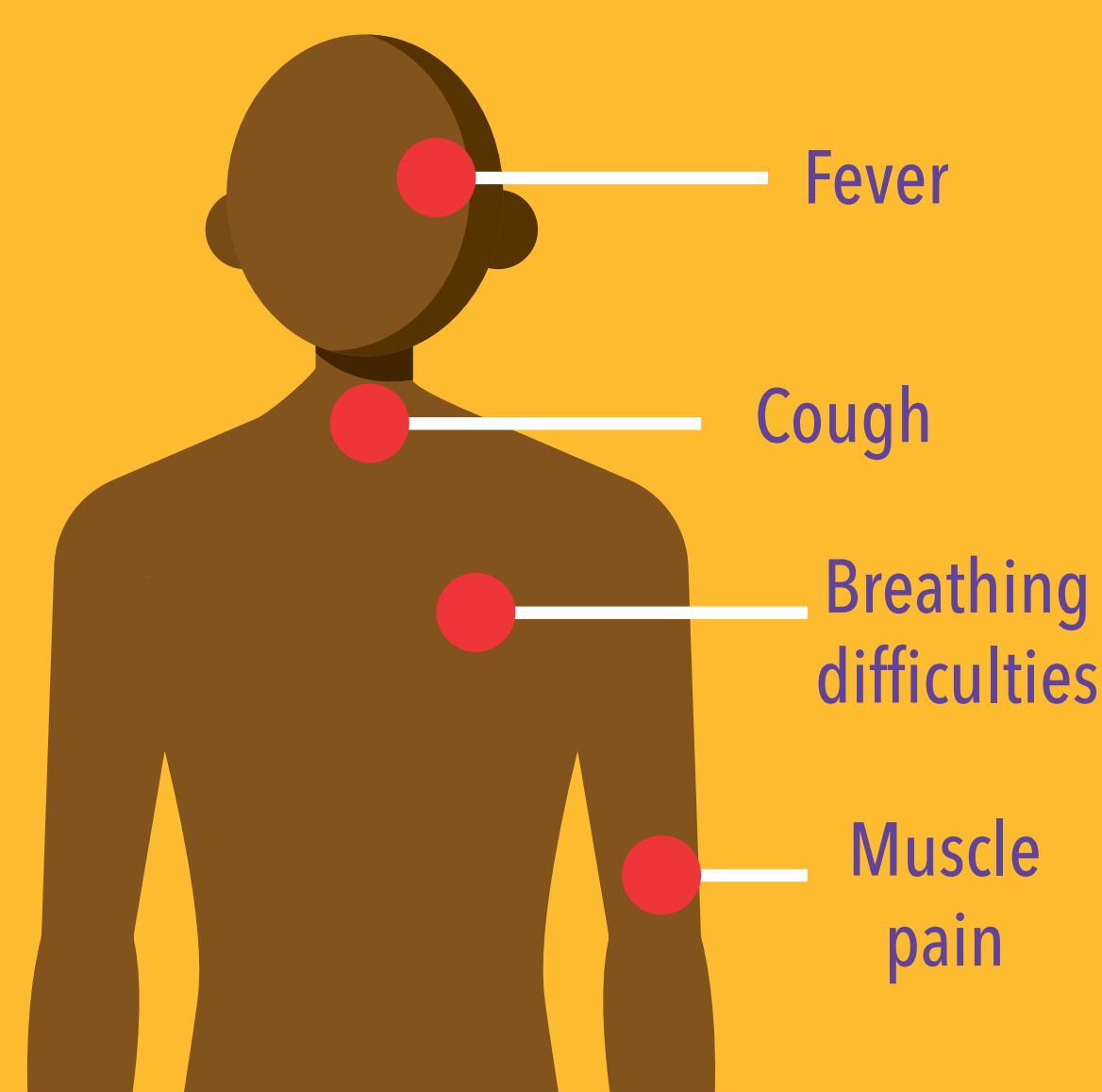
## WHO IS MOST AT RISK?

We still need to learn more about how COVID-19 affects people. Older people, and people with other medical conditions, such as asthma / chronic respiratory disease, diabetes and heart disease or any other condition that compromises the immune system, appear to be more at risk.



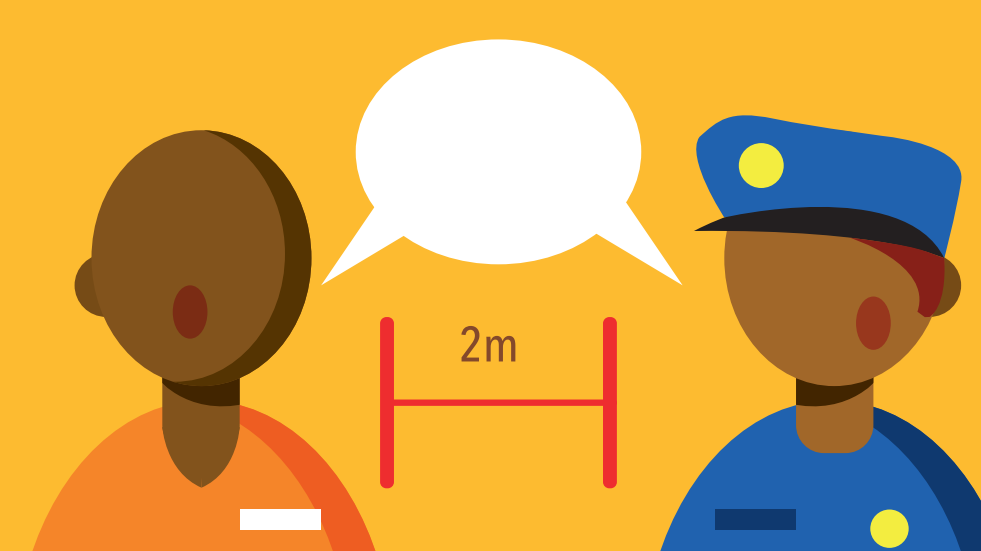
## SYMPTOMS

In most cases, COVID-19 causes mild symptoms including a runny nose, sore throat, cough, fever and general fatigue. It can be more severe for some people and can lead to pneumonia or breathing difficulties. In some cases, infection can lead to death.



## HOW WILL THIS IMPACT PRISON?

Preventing COVID-19 from entering the prison will require **significant** yet **temporary** changes to the regular prison routine. This may include access into the prison, restrictive movement, and limited prisoner activities. While disruptive, these temporary measures are necessary to protect staff, prisoners, and the community from COVID- 19.



## HOW DOES COVID-19 SPREAD

COVID-19 appears to spread most easily through close contact with an infected person (within 1 meter). When someone who has COVID-19 coughs or sneezes, small droplets are released and, if you are too close, you can breathe in the virus.

A person may become infected also by touching contaminated surfaces or objects, and then touching their face (e.g. a person may touch a doorknob or shake hands and then touch their own face). Therefore, environmental disinfecting is so **important**.

